

# Push Switches

## Mini One Dome Switches : JPM (mini1dome) Series

### ■ Features

1. Low-profile design enabled by a unique structure without key stems.
2. Spring contact mechanism for high PCB contact reliability.
3. Solderless mounting supports environmentally friendly recycling.
4. Includes a sheet with an actuator function.
5. Available in variations for different PCB mounting positions.

### ■ Specifications

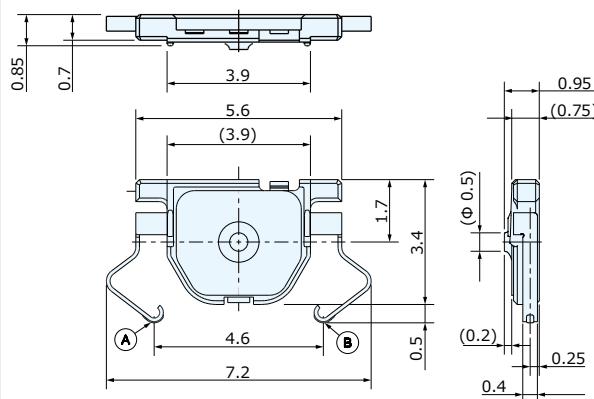
- External Dimension : 5.6 x 3.4 x 0.95mm
- Rating : DC 12V, 10mA
- Circuit : SPST
- Life Cycle : 200,000 cycles
- Operating Force : 2.2N
- Travel : 0.16mm
- Packing Quantity : 2,500pcs/Reel

### ■ Product Lineup

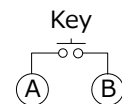
Drawing No.	Mounting Position
JPM1990-7511F	On PCB
JPM1990-7314F	Center of PCB



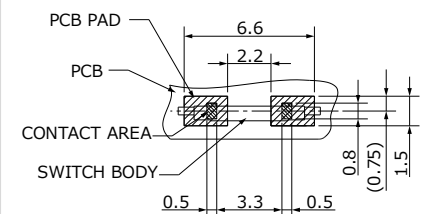
**Outline Drawing : JPM1990-7511F**



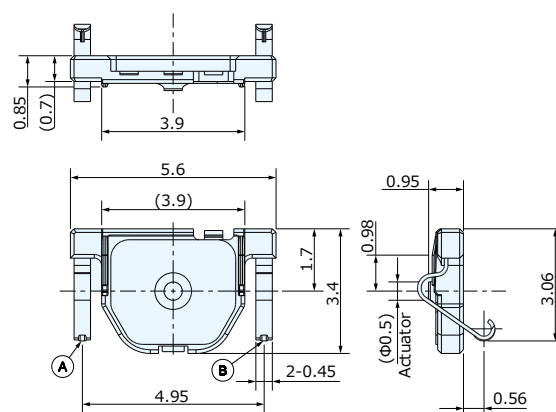
**Circuit : SPST**



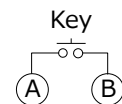
**P.C. Board Dimension**



**Outline Drawing : JPM1990-7314F**



**Circuit : SPST**



**P.C. Board Dimension**

