

# Push Switches

## Rubber Push Switches : JPM (LSP) Series

### ■ Features

1. Lower contact resistance is made possible by metal contact structure.
2. High operation force, long stroke and high click feedback help prevent incomplete operation.
3. External dimensions of only 5.7mm X 6.0mm is a definite contributing element to high density mounting.
4. A wide range of operating forces, from 1.57 N to 4.0 N, is available.

### ■ Specifications

- External Dimension : 5.7 x 6.0 x 5.0mm
- Rating : DC 16V, 50mA
- Circuit : SPST
- Life Cycle : 300,000 cycles
- Operation Force : 1.57N, 1.96N, 2.45N, 3.0N, 3.5N, 4.0N
- ON stroke : 1.0mm/1.3mm
- Packing Quantity : 1,500pcs/Reel

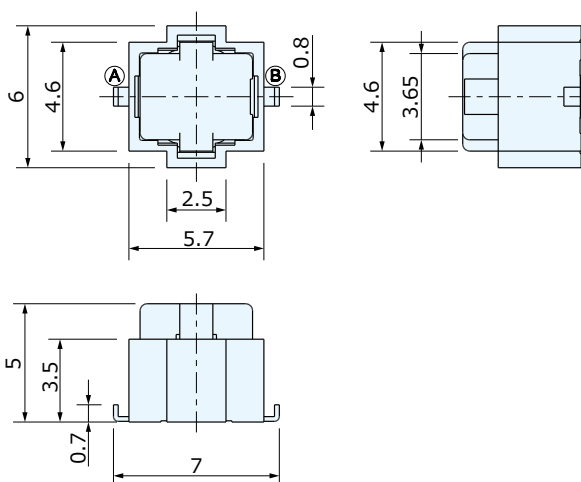
### ■ Product Lineup

Drawing No. JPM1040-□□□□F						
Travel	ON Stroke	1.3mm		1.3mm	1.0mm	
	Full Stroke	1.5mm		1.65mm	※1.5mm	
Country of Origin		China	Japan	China	China	Japan
Operating Force	1.57±0.5N	1213	4211	2213	3213	6211
	1.96±0.6N	0513	4511	2513	-	-
	2.45±0.7N	0414	-	2414	-	-
	3.0±0.8N	0713	4713	2713	3713	6711
	3.5±0.95N	0913	4911	2913	3913	6911
	4.0±1.0N	1013	4011	2013	-	-

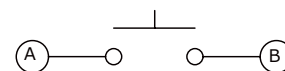
\*Providing a stopper mechanism at the set on  $1.35^{+0.1}_{-0}$  mm.



### Outline Drawing



### Circuit : SPST



### P.C. Board Dimension

