

Board to Wire Connectors

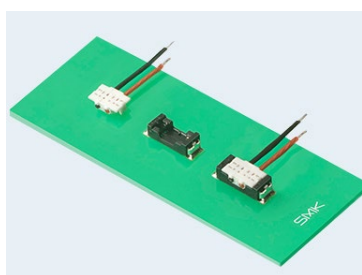
2P Board to Wire ID Method Connectors: ID-01 Series

■ Features

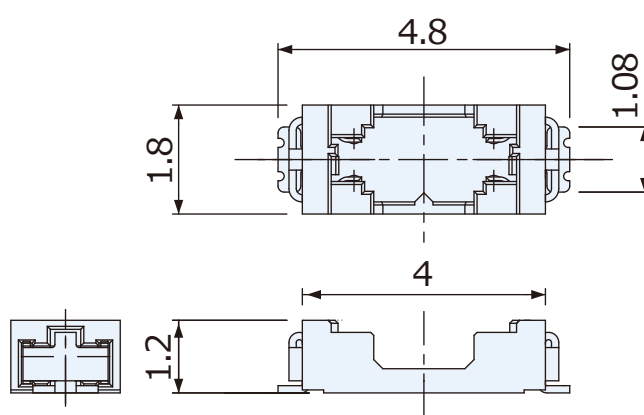
1. A low-profile 2P wire-to-board connector of 1.0mm pitch and mating height of 1.2 mm.
2. Resistant to vibration and shocks when dropped and highly reliable due to a 2-point contact structure.
3. Excellent cable retention performance and contact reliability due to double pressure connected cables at anteroposterior positions.
4. Excellent in addition to ensured positive clicking feeling during insertion or withdrawal due to the locking structure.
5. A reverse insertion prevention design.

■ Specifications

- Pitch : 1.0mm
- Number of Pins : 2
- Rated Voltage AC/DC : 30V AC/DC, 1A
- Mounting Style : SMT
- Applicable Electrical Wire : AWG32
- Contact Resistance : 20mΩ max.
- Insulation Resistance : 100MΩmin. at 250V DC
- Withstanding Voltage : 250V AC (for one minute)
- Operating Temperature Range : -30°C to +80°C



Receptacle(Board side) : CFX2102-0201F



Plug (Harness side) : CFX2302-0201F

