

Board to Board (FPC) Connectors

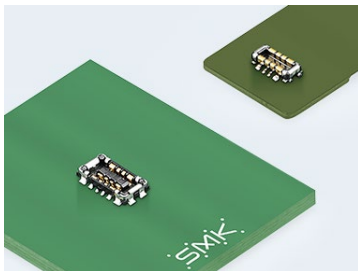
Board to FPC Connectors: FB-10 Series

■ Features

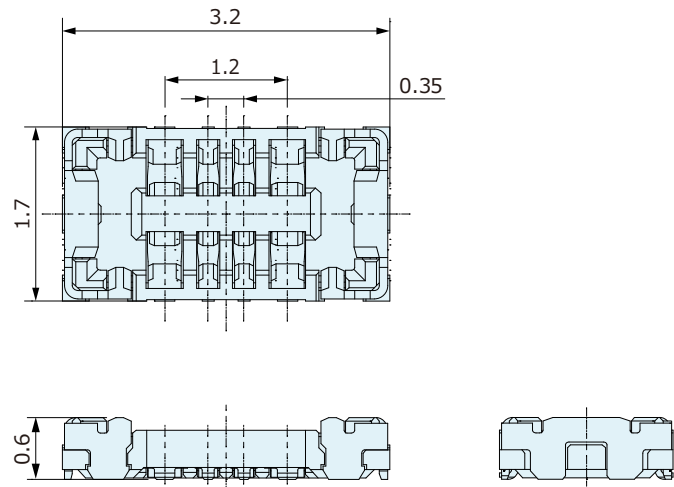
1. Large current connector for battery.
2. Highly reliable and stable connection using SMK's unique contact structure.
3. High retention force by SMK's unique locking mechanism on the contact terminal and hold-down.
4. Power terminal supports 6A current (when using 4pins for power).
5. Multiple pin count with 8pins satisfies the need of multifunctional battery (Power : 4Pin, Signal : 4Pin).
6. Low profile and space-saving design with 0.6mm mating height, 1.7mm width and 3.2mm depth.

■ Specifications

- Pitch : 0.35mm
- Mating Height : 0.6mm
- Width : 1.7mm (Socket)
- Number of Pins : 8 (Power : 4Pin, Signal : 4Pin)
- Contact Resistance : 20V AC/DC, 3.0A/pin (Power), 0.3A/pin (Signal)
- Contact Resistance : 20mΩ max. (Power Pin), 40mΩ max. (Signal Pin)
- Insulation Resistance : 1,000MΩ min. at 100V DC
- Withstanding Voltage : 100V AC (for one minute)
- Operating Temperature Range : -25°C to +85°C



Socket : CPBD308-0101F



Plug : CPBD408-0101F

