

Detector Switches

Detector Switch : DSI-III Series

■ Features

1. Enables operation detection in both vertical and horizontal directions.
2. Designed with a long 2 mm on-stroke.
3. Available in both push-on and push-off types.
4. Available with standard and wide lever widths.
5. Available with J-lead and L-bend terminals.

■ Specifications

- External Dimension : 4.6 x 3.7 x 1.0mm
- Rating : DC 5V, 10mA
- Circuit : SPST
- Life cycle : 50,000 cycles
- Operating Force : 0.35N
- Operating System : push-off/push-on
- Packing Quantity : 5,000pcs/Reel

■ Product Lineup

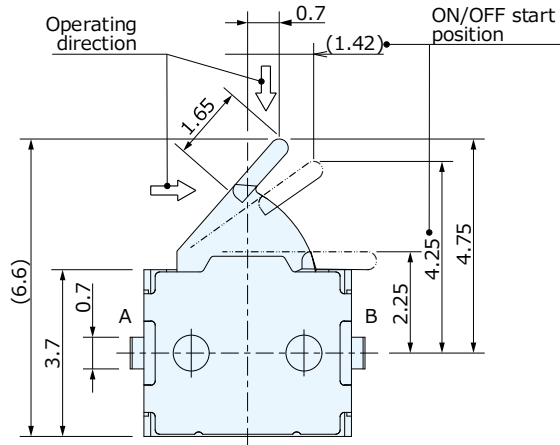
Drawing No.	Operation	Lever Width	Terminal Type	Boss
JPS1120-3012F	push-on	Standard	J-Lead	with
JPS1110-3212F	push-on	Standard	J-Lead	Without
JPS1120-3412F	push-on	Standard	L-Bend	with
JPS1120-3612F	push-on	Standard	L-Bend	Without
JPS1120-3812F	push-on	Wide	J-Lead	with
JPS1120-4012F	push-on	Wide	J-Lead	Without
JPS1120-4212F	push-on	Wide	L-Bend	with
JPS1120-4412F	push-on	Wide	L-Bend	Without
JPS1120-4612F	push-off	Standard	J-Lead	with
JPS1120-4712F	push-off	Standard	J-Lead	Without
JPS1120-4812F	push-off	Standard	L-Bend	with
JPS1120-4912F	push-off	Standard	L-Bend	Without
JPS1120-5012F	push-off	Wide	J-Lead	with
JPS1120-5112F	push-off	Wide	J-Lead	Without
JPS1120-5212F	push-off	Wide	L-Bend	with
JPS1120-5312F	push-off	Wide	L-Bend	Without

Detector Switches

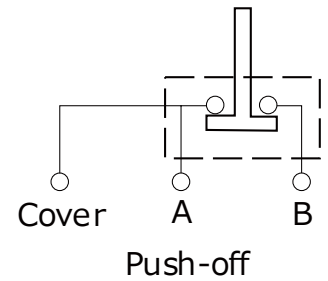
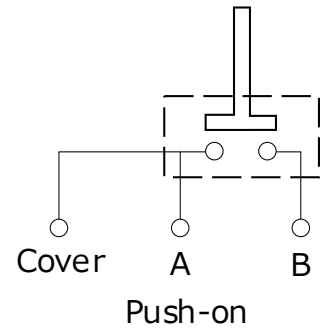
Detector Switch : DSI-III Series



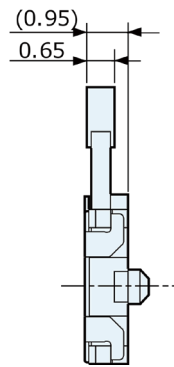
Outline Drawing



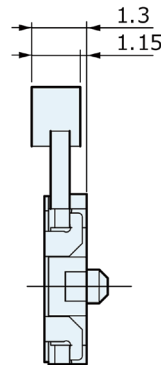
Circuit : SPST



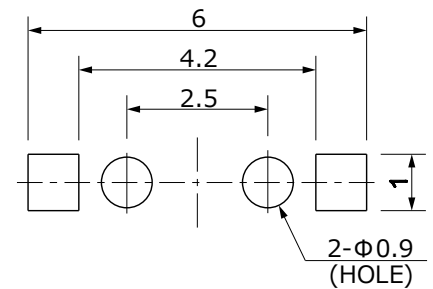
Lever : Standard



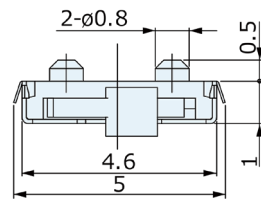
Lever : Wide



P.C. Board Dimension



Terminal : J-Lead



Terminal : Bend

