

RF Coaxial Connectors

Coaxial Connectors for Automotive Camera Module (Z Floating Type) : CM-Z Series

■ Features

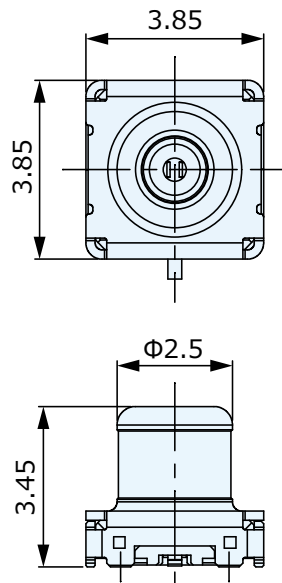
1. This is a connector for high pixel type automotive camera modules.
2. Covers a wide operating frequency range from DC to 6GHz, and achieves excellent high frequency performance.

■ Specifications

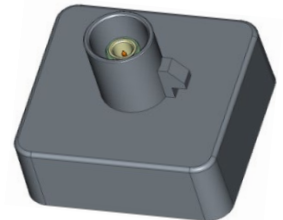
- Floating amount : $Z = \pm 0.5\text{mm}$
- Frequency Range : DC to 6GHz
- Nominal Impedance : 50Ω
- Operating Temperature Range : -40°C to $+105^{\circ}\text{C}$



Receptacle : CKV5001-0850F



Receptacle



Rear Case
(Customizable)