

# Detector Switches

## DSI-II Series :Detector Switches

### ■ Features

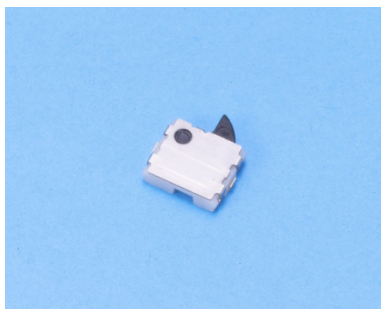
1. Input from 2 directions, either vertical or horizontal to the switch, possible.
2. Only 3.9(W) X 3.3(D) X 1(H) mm, the smallest in the industry class.
3. Operation force as small as 0.35N.
4. 90 degree operation angle due to the employment of a lever shaft.
5. Two types are available of push-on and push-off.

### ■ Specification

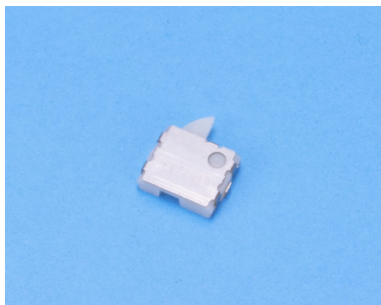
- External Dimension :3.9 X 3.3 X 1mm
- Rating :10mA, 5V DC
- Circuit :SPST
- Operating Life :50,000 cycles
- Operating Force :0.35N
- Travel :1.3mm
- Operating System :Non-lock push-off/push-on

### ■ Variation

Part No.	Operating System	Boss	Lever Direction
JPS1110-6511F	Push-off	With	Left
JPS1110-6711F	Push-off	Without	Left
JPS1110-6811F	Push-on	With	Right
JPS1110-6911F	Push-on	With	Left
JPS1110-7011F	Push-on	Without	Right
JPS1110-7111F	Push-on	Without	Left

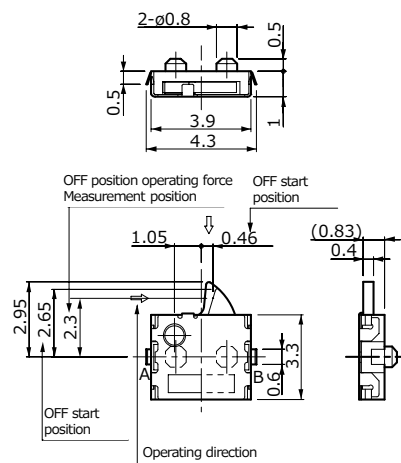


5,000 pcs/reel

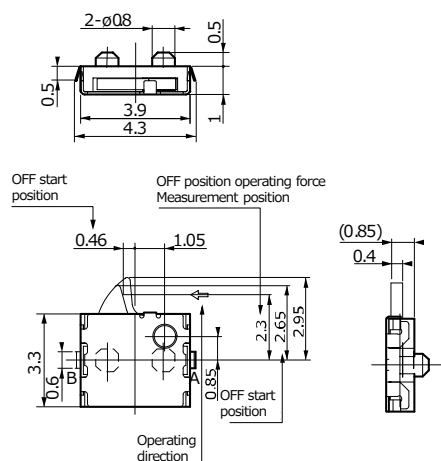


5,000 pcs/reel

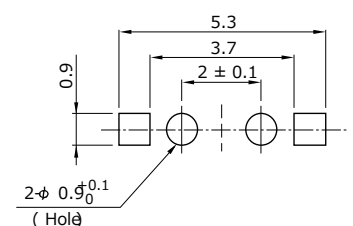
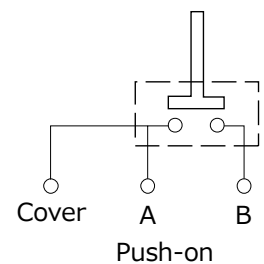
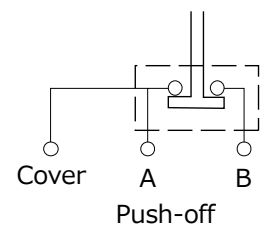
### JPS1110-□□11F



### JPS1110-□□11F



### Circuit : SPST



### P. C. Board Dimension